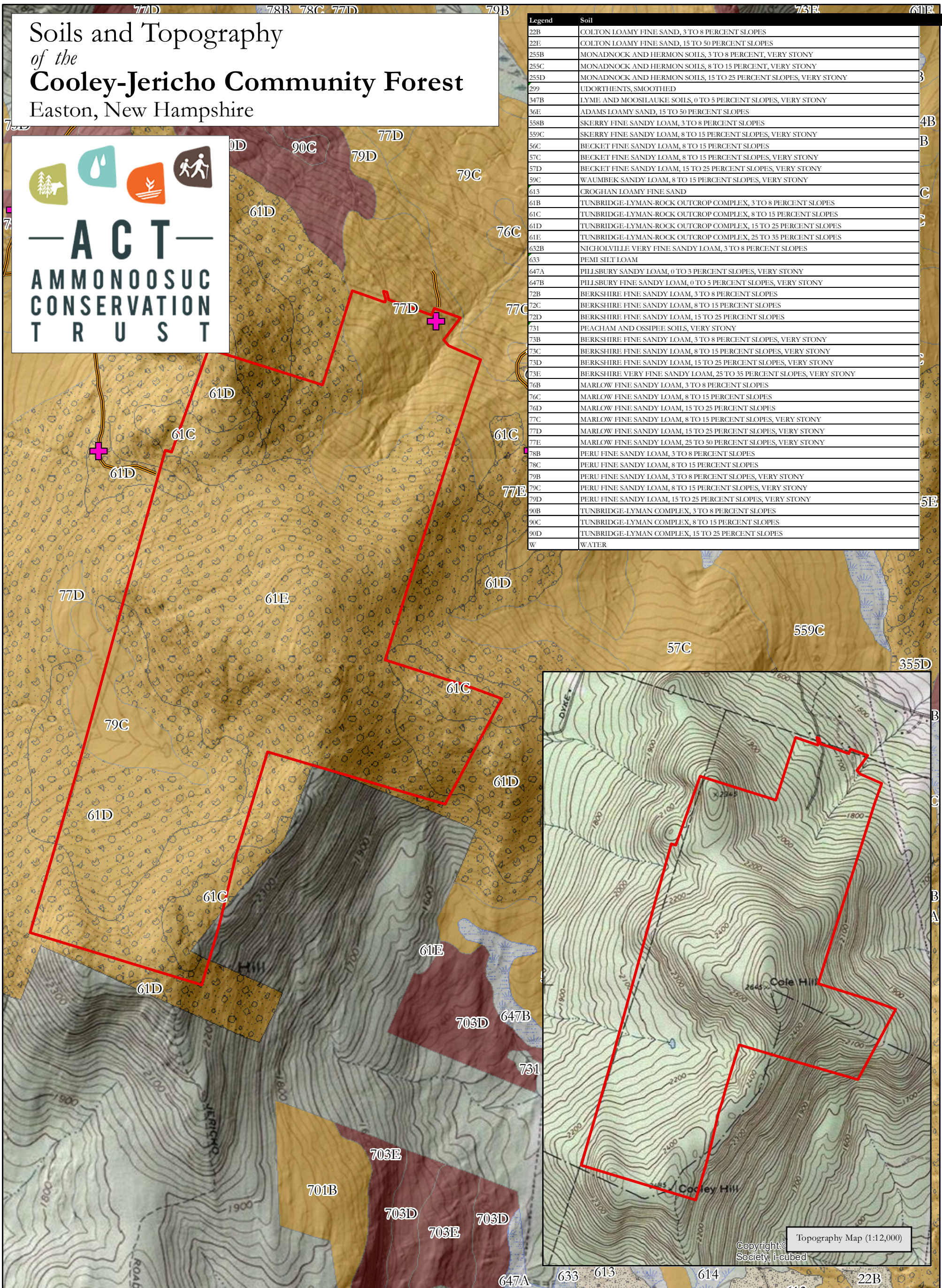


Soils and Topography of the Cooley-Jericho Community Forest

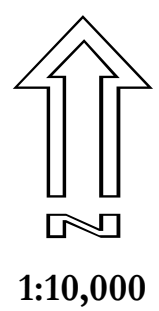
Easton, New Hampshire



Legend	Soil
22B	COLTON LOAMY FINE SAND, 3 TO 8 PERCENT SLOPES
22E	COLTON LOAMY FINE SAND, 15 TO 50 PERCENT SLOPES
255B	MONADNOCK AND HERMON SOILS, 3 TO 8 PERCENT, VERY STONY
255C	MONADNOCK AND HERMON SOILS, 8 TO 15 PERCENT, VERY STONY
255D	MONADNOCK AND HERMON SOILS, 15 TO 25 PERCENT SLOPES, VERY STONY
299	UDORTHENTS, SMOOTHED
347B	LYME AND MOOSLAUKE SOILS, 0 TO 5 PERCENT SLOPES, VERY STONY
36E	ADAMS LOAMY SAND, 15 TO 50 PERCENT SLOPES
558B	SKERRY FINE SANDY LOAM, 3 TO 8 PERCENT SLOPES
559C	SKERRY FINE SANDY LOAM, 8 TO 15 PERCENT SLOPES, VERY STONY
56C	BECKET FINE SANDY LOAM, 8 TO 15 PERCENT SLOPES
57C	BECKET FINE SANDY LOAM, 8 TO 15 PERCENT SLOPES, VERY STONY
57D	BECKET FINE SANDY LOAM, 15 TO 25 PERCENT SLOPES, VERY STONY
59C	WAUMBEEK SANDY LOAM, 8 TO 15 PERCENT SLOPES, VERY STONY
613	CROGHAN LOAMY FINE SAND
61B	TUNBRIDGE-LYMAN-ROCK OUTCROP COMPLEX, 3 TO 8 PERCENT SLOPES
61C	TUNBRIDGE-LYMAN-ROCK OUTCROP COMPLEX, 8 TO 15 PERCENT SLOPES
61D	TUNBRIDGE-LYMAN-ROCK OUTCROP COMPLEX, 15 TO 25 PERCENT SLOPES
61E	TUNBRIDGE-LYMAN-ROCK OUTCROP COMPLEX, 25 TO 35 PERCENT SLOPES
632B	NICHOLVILLE VERY FINE SANDY LOAM, 3 TO 8 PERCENT SLOPES
633	PEMI SILT LOAM
647A	PILLSBURY SANDY LOAM, 0 TO 3 PERCENT SLOPES, VERY STONY
647B	PILLSBURY FINE SANDY LOAM, 0 TO 5 PERCENT SLOPES, VERY STONY
72B	BERKSHIRE FINE SANDY LOAM, 3 TO 8 PERCENT SLOPES
72C	BERKSHIRE FINE SANDY LOAM, 8 TO 15 PERCENT SLOPES
72D	BERKSHIRE FINE SANDY LOAM, 15 TO 25 PERCENT SLOPES
731	PEACHAM AND OSSIPÉE SOILS, VERY STONY
73B	BERKSHIRE FINE SANDY LOAM, 3 TO 8 PERCENT SLOPES, VERY STONY
73C	BERKSHIRE FINE SANDY LOAM, 8 TO 15 PERCENT SLOPES, VERY STONY
73D	BERKSHIRE FINE SANDY LOAM, 15 TO 25 PERCENT SLOPES, VERY STONY
73E	BERKSHIRE VERY FINE SANDY LOAM, 25 TO 35 PERCENT SLOPES, VERY STONY
76B	MARLOW FINE SANDY LOAM, 3 TO 8 PERCENT SLOPES
76C	MARLOW FINE SANDY LOAM, 8 TO 15 PERCENT SLOPES
76D	MARLOW FINE SANDY LOAM, 15 TO 25 PERCENT SLOPES
77C	MARLOW FINE SANDY LOAM, 8 TO 15 PERCENT SLOPES, VERY STONY
77D	MARLOW FINE SANDY LOAM, 15 TO 25 PERCENT SLOPES, VERY STONY
77E	MARLOW FINE SANDY LOAM, 25 TO 50 PERCENT SLOPES, VERY STONY
78B	PERU FINE SANDY LOAM, 3 TO 8 PERCENT SLOPES
78C	PERU FINE SANDY LOAM, 8 TO 15 PERCENT SLOPES
79B	PERU FINE SANDY LOAM, 3 TO 8 PERCENT SLOPES, VERY STONY
79C	PERU FINE SANDY LOAM, 8 TO 15 PERCENT SLOPES, VERY STONY
79D	PERU FINE SANDY LOAM, 15 TO 25 PERCENT SLOPES, VERY STONY
90B	TUNBRIDGE-LYMAN COMPLEX, 3 TO 8 PERCENT SLOPES
90C	TUNBRIDGE-LYMAN COMPLEX, 8 TO 15 PERCENT SLOPES
90D	TUNBRIDGE-LYMAN COMPLEX, 15 TO 25 PERCENT SLOPES
W	WATER



- CJCF Boundary
- Landings
- Access Road
- Most Productive (IA)
- Productive (IB)
- Productive (IC)
- Rocky with Limitations (IIB)
- Poorly Drained with Limitations (IIB)



Data Sources: Soil data from NH GRANIT.
 Topo maps from ArcGIS online.
 Remaining data interpreted from aerial imagery,
 survey data, and/or GPS
 measurements by the
 Ammonoosuc Conservation Trust.

This map is not a survey and should not be used or construed
 for such purposes. Map contains data of varying accuracy and age.

Map produced: 5/15/2020
 Map Coordinate System: NH State Plane (NAD 83)
 Background: USGS Topographic